

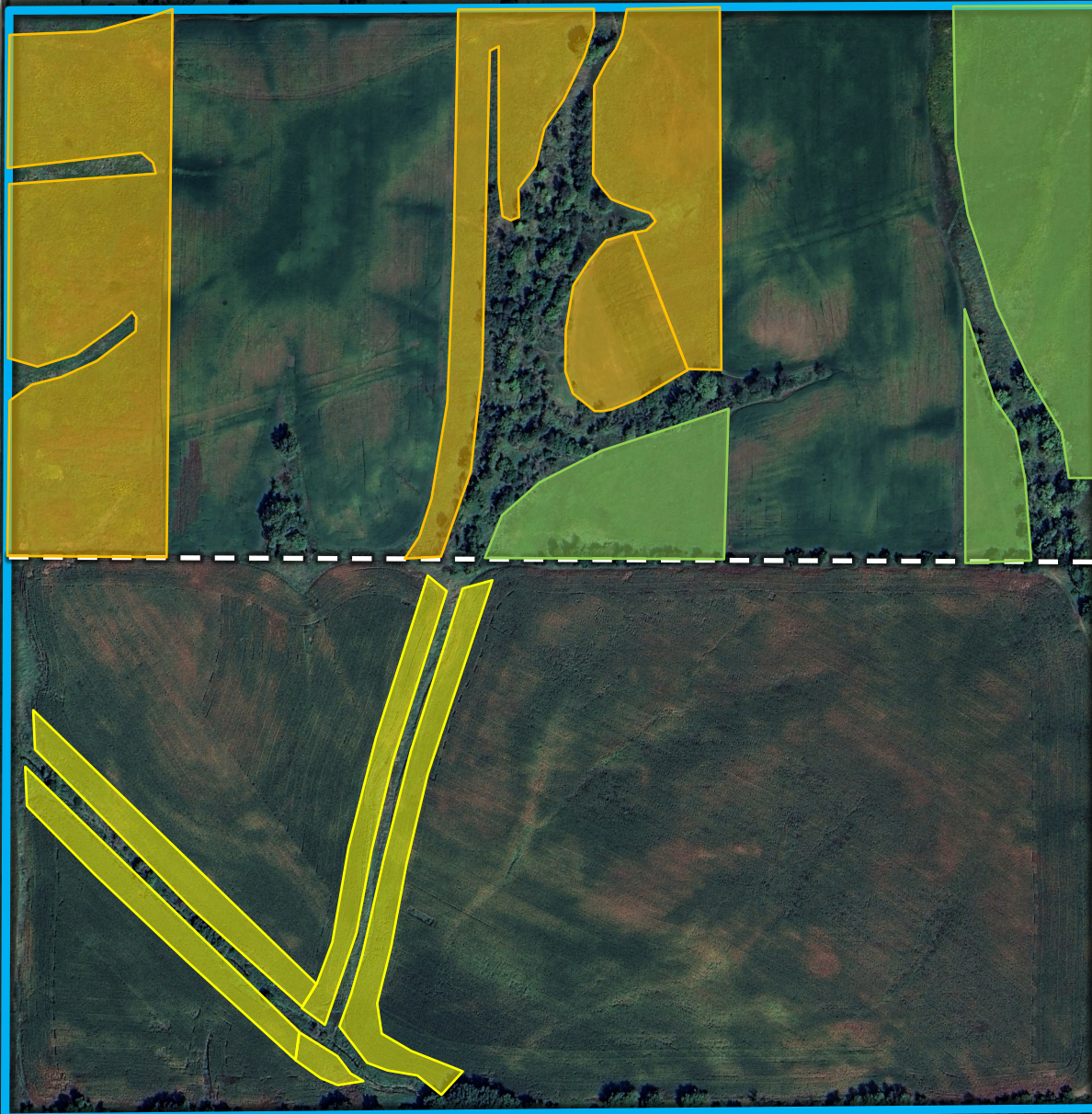


CP1 Contract thru 2032 - 10.78 Acres, \$1,817 Annually (\$168.51/Acre)



CP38-2/12 Contract thru 2037 - 20.92 Acres, \$3,653 Annually (\$174.61/Acre)

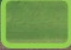


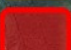

105TH STREET



CP21/22 Contract thru 2039 - 9.37 Acres, \$2,811 Annually (\$300/Acre)

\*All lines are approximate.

105TH STREET

-  CP25 Contract thru 2027 - 50.88 Acres, \$7,029 Annually (\$138.14/Acre)
-  CP38E-4D/12/25 Contract thru 2029 - 31.25 Acres, \$6,175 Annually (\$197.61/Acre)
-  CP3A/CP39E-4D/12 Contract thru 2035 - 39.83 Acres, \$5,463 Annually (\$137.16/Acre)
-  CP2/3 Contract thru 2030 - 4.45 Acres, \$610 Annually (\$137.16/Acre)
-  CP23 Contract thru 2040 - 6.90 Acres, \$1,358 Annually (\$196.81/Acre)

